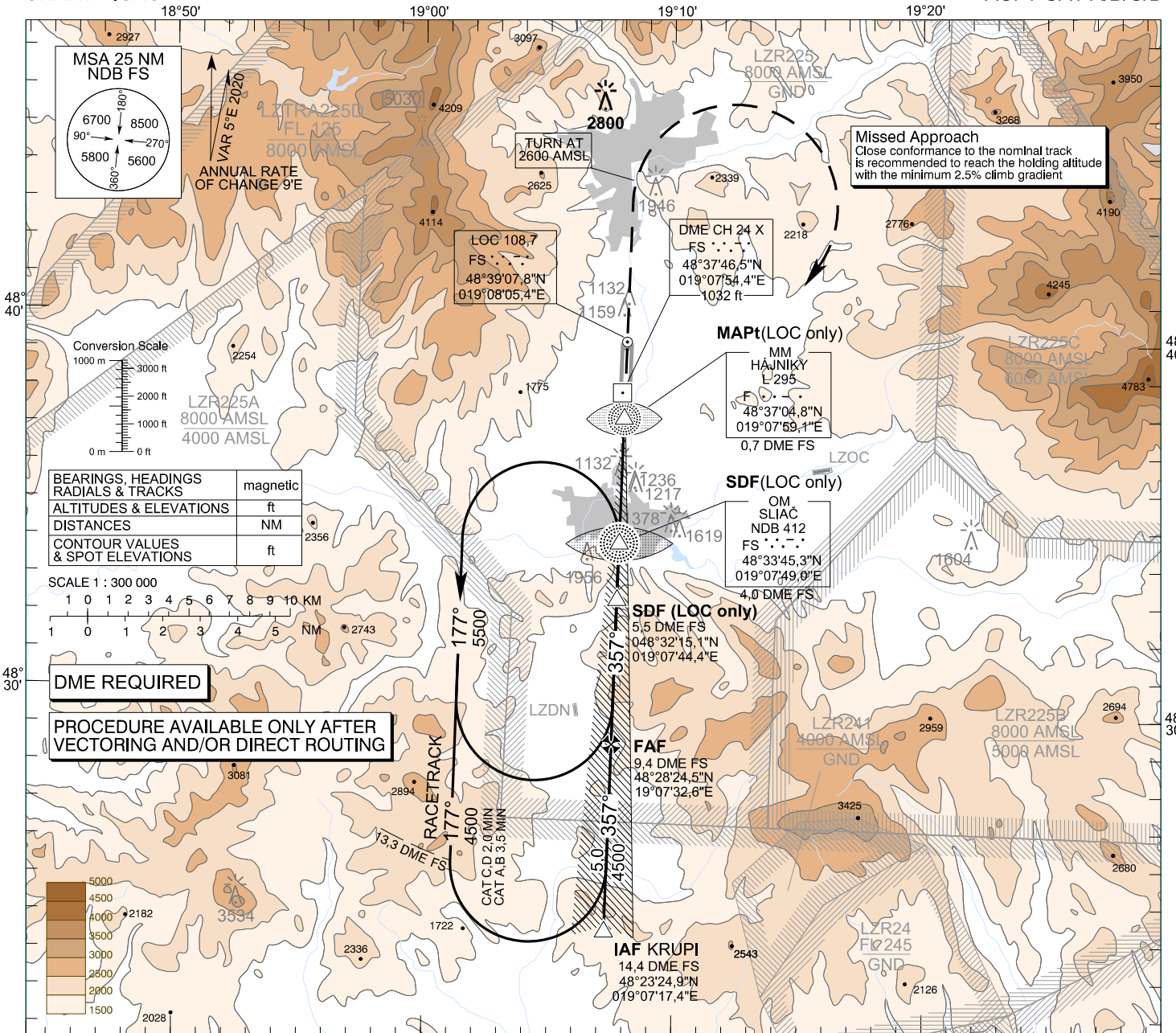


**INSTRUMENT  
APPROACH  
CHART - ICAO**

**TRANSITION ALTITUDE**  
10 000 ft  
AD ELEV 1043,8 - 38 hPa  
THR RWY 36 ELEV 1014,5 - 37 hPa

**SLIAČ APPROACH/RADAR** 119,155  
**SLIAČ TOWER** 122,905

**SLIAČ (LZSL)  
ILS CAT I or LOC RWY 36  
ACFT CAT A/B/C/D**



BEARINGS, HEADINGS  
RADIALS & TRACKS magnetic

ALTITUDES & ELEVATIONS ft

DISTANCES NM

CONTOUR VALUES & SPOT ELEVATIONS ft

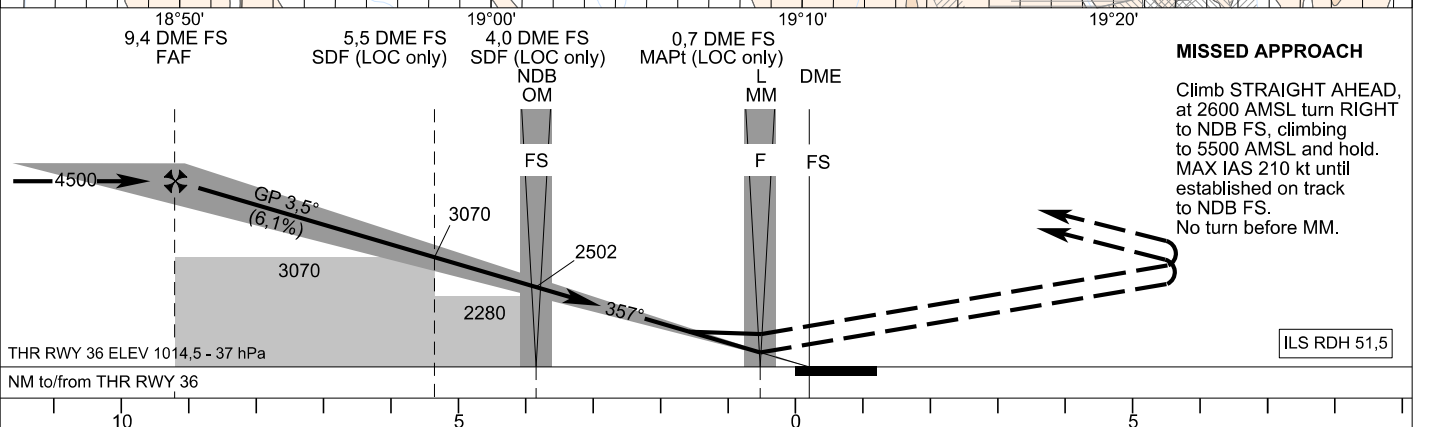
SCALE 1 : 300 000

1 0 1 2 3 4 5 6 7 8 9 10 KM

1 0 1 2 3 4 5 NM

**DME REQUIRED**

**PROCEDURE AVAILABLE ONLY AFTER  
VECTORIZING AND/OR DIRECT ROUTING**



Straight-In Approach	OCA (OCH)	ASC	A				B				C				D			
			2.5%	5.0%	2.5%	5.0%	2.5%	5.0%	2.5%	5.0%	2.5%	5.0%	2.5%	5.0%	2.5%	5.0%		
CAT I	without SDF	ft	1763 (749)	1777 (763)	1787 (773)	1800 (786)	3070 (2056)	1940 (926)	3070 (2056)	1520 (506)	2410 (1366)	2810 (1766)	2840 (1796)					
	with SDF	ft	1176 (162)	1186 (172)	1202 (188)	1220 (206)												
LOC	without SDF	ft																
	with SDF	ft																
Circling (* see Note)		ft																

DME FS	NM	9.0	8.0	7.0	6.0	5.0	4.0	3.0	2.0
ALTITUDES	ft	4361	3989	3617	3246	2874	2502	2131	1759
Ground speed	kt	70	90	100	120	140	160	180	
FAF - MAPt (8,7 NM)	min:sec	7:27	5:47	5:13	4:20	3:43	3:15	2:54	
Rate of descent (6,1%)	ft/min	434	557	619	743	867	991	1115	

Timing not authorized for defining the MAPt

CHANGES: new chart